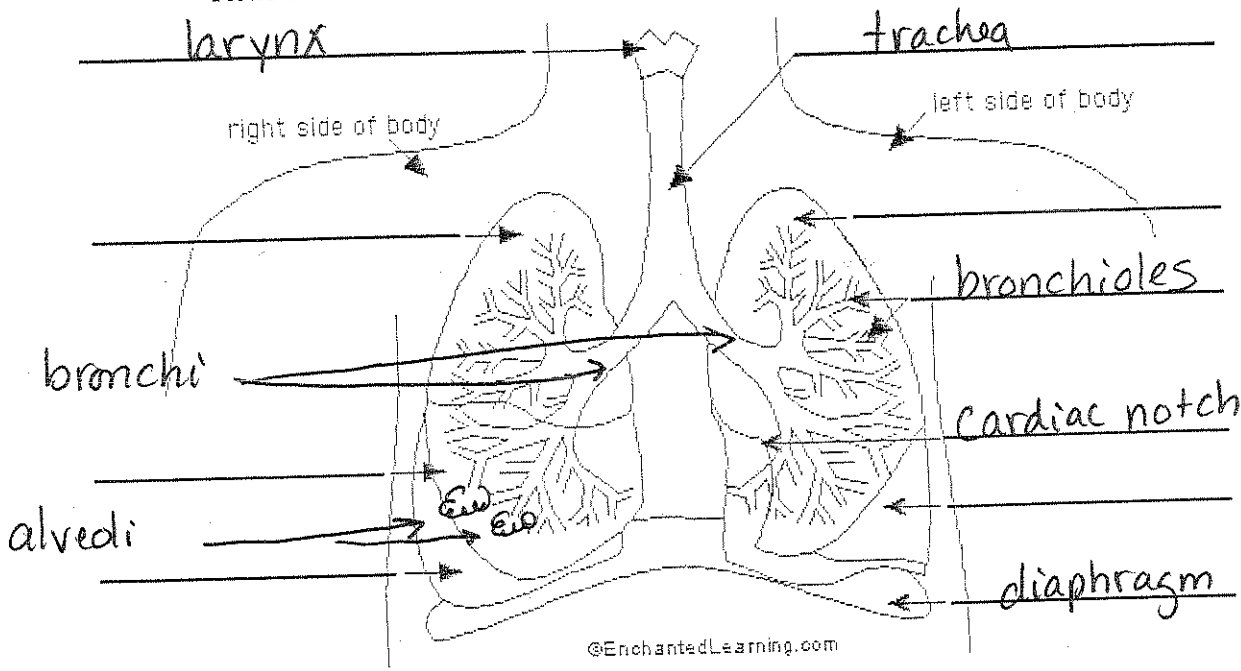


Label the Lungs

Read the definitions below, then label the lung anatomy diagram.



bronchial tree - the system of airways within the lungs, which bring air from the trachea to the lung's tiny air sacs (alveoli).

cardiac notch - the indentation in the left lung that provides room for the heart.

diaphragm - a muscular membrane under the lungs.

larynx - a muscular structure at the top of the trachea, containing the vocal cords.

left inferior lobe - the bottom lobe of the lung on the left side of the body.

left superior lobe - the top lobe of the lung on the left side of the body.

right inferior lobe - the bottom lobe of the lung on the right side of the body.

right middle lobe - the middle lobe of the lung on the right side of the body.

right superior lobe - the top lobe of the lung on the right side of the body.

trachea (windpipe) - the tube through which air travels from the larynx to the lungs.

↳ has cilia to get rid of foreign bodies

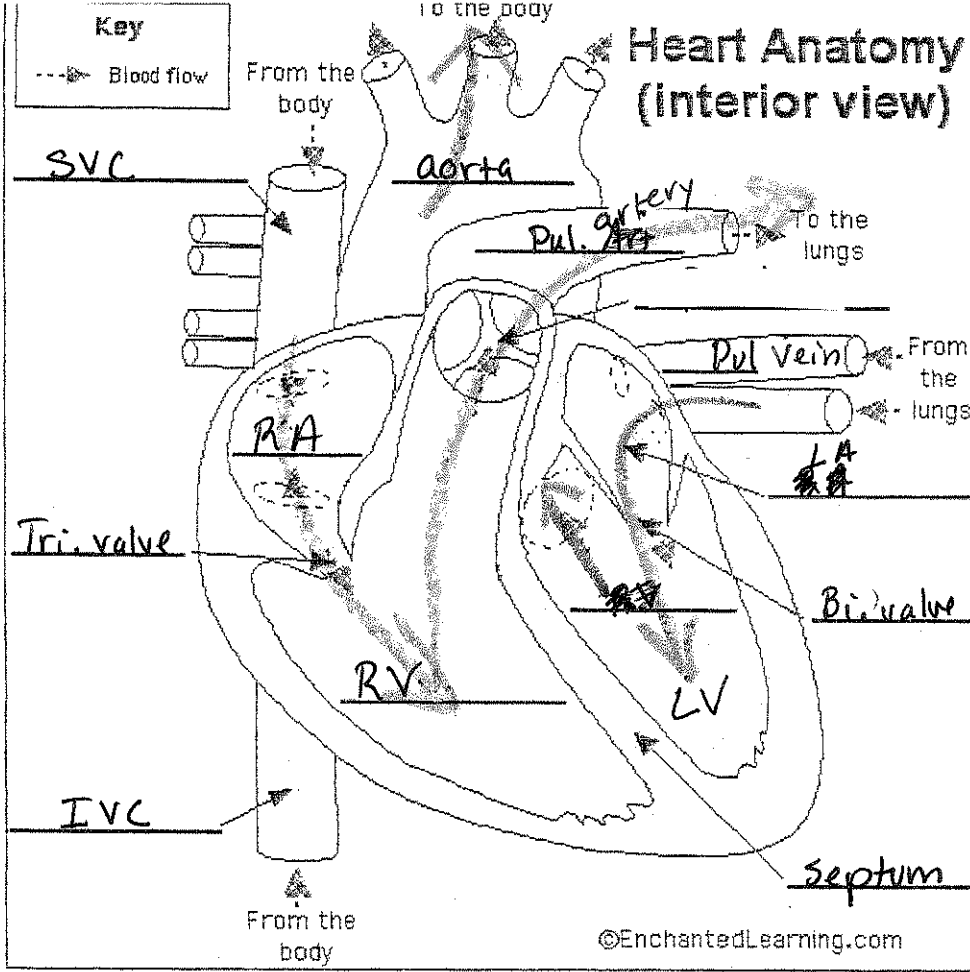
breathing = air in and out

diaphragm and ribs contract
negative pressure pulls air in
relax muscles pushes air out

alveoli and capillaries
exchange O_2 & CO_2

↳ passive diffusion

respiration = exchange of ~~gases~~ ^{gases}
- alveoli of lungs

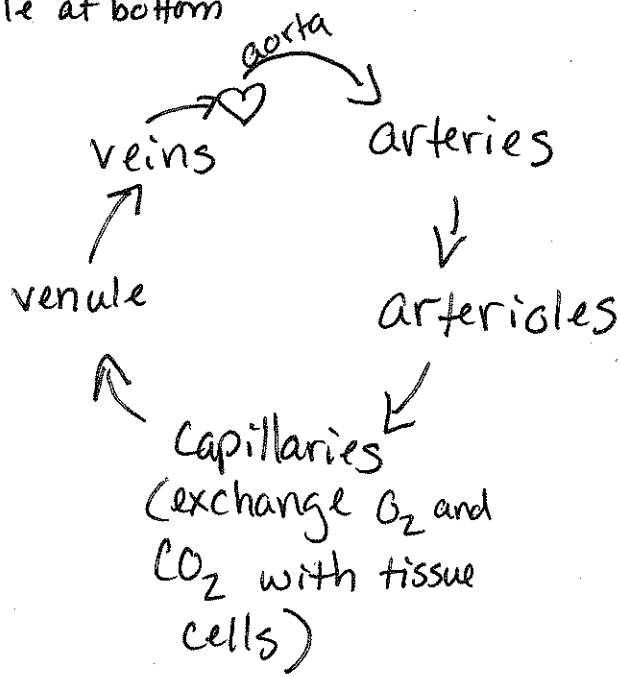


Label the heart

- aorta
- inferior vena cava
- superior vena cava
- left atrium
- right atrium
- bicuspid/mitral valve
- tricuspid valve
- septum
- pulmonary arteries

② draw the flow of oxygenated and deoxygenated blood in the heart
 - red oxygenated
 - blue deoxygenated

♥ A
 V
 Atrium at top
 Ventricle at bottom



* electricity makes heart pump

* heart is a muscle

arteries → blood goes from ♥ to body
 veins → blood goes from body to heart